

TECHNICAL BULLETIN

WAWEL CUP 2024

COMPETITION SCHEDULE

10.07	Model Event	15:00 - 18:00
11.07	Stage I	15:00
12.07	Stage II	9:00
12.07	Stage III	15:00
13.07	Stage IV	10:00
13.07	Trail O	11:00 - 15:00
14.07	Stage V	9:00

MODEL EVENT

ŁOPACIŃSKI VALLEY

10.07.2024, start 15:00-18:00

	LENGTH	CLIMB	CONTROLS
L	3,3 KM	90 m	11
M	2,8 KM	90 m	9
S	1,7 KM	60 m	6

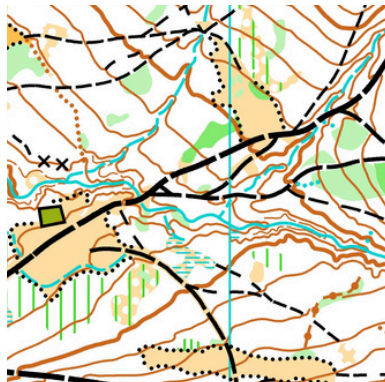


Map scale:
1:10 000

Contour lines -
every 5 meters

Cartographer:
Włodzimierz Dyzio

Course planner:
Włodzimierz Dyzio



An area characterized by a large number of watercourses. The forest is mostly well runnable, the area is adjacent to the map of stage IV and V.

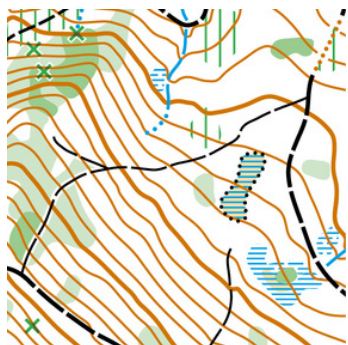
- Maps available in the training center.
- SI units are on controls.
- Start from SI Unit in any minute (in Model Event hours) - from 6:00 p.m. control points can be collected in the order from start to finish.
- Model Event results will be available in the evening on our website.

1st stage **WYSOWSKA STEELWORKS**

11.07.2024, start 15:00

Cartographer:
Wojciech Dwojak

Course planner:
Michał Garbacik



LONG DISTANCE SHORTENED

The forest is mostly very well runnable and the road network is moderately developed. The area is crossed by 4 deep ravines, which require the selection of individual route choice.

Elevation gain - 250 meters.

TECHNICAL ISSUES

- Road to the start - 1,1 km - blue ribbons.
- Road to the starting point - 70 meters.
- Road to the start is partly along an asphalt road - please be careful.
- WM10N and Rodzinna courses are marked with "smiling and frowning faces".
- There will be a drinking water point on one of the paths in the forest. The road to it will depend on the selection of the route choice.
- **Time limit - 150 minutes.**

Map scale 1:10 000

For categories W55 - W70 and M65 - M80
Map scale 1:7 500

2nd stage HUTNIAŃSKA PASS

12.07.2024, start 9:00

Cartographer:
Jacek Morawski

Course planner:
Włodzimierz Dyzio



MIDDLE DISTANCE

This is the shortest stage, with slight elevation gain. The area is very well runnable, the road network is practically non-existent. In the forest you will find numerous watercourses, marshes and rock formations.

TECHNICAL ISSUES

- Road to the start - for categories WM10N, W10, M10, W12, M12, WM12-14B, Rodzinna - 800 meters (60 meters of elevation gain) - yellow ribbons.
 - Road to the start for the remaining - 1,2 km (90 m elevation gain) - blue ribbons.
 - Road to the starting point - 50 metrów.
 - WM10N and Rodzinna courses are marked with "smiling and frowning faces".
 - Categories WM10N, W10, M10, W12, M12, WM12-14B, Rodzinna finish the race at the finish line in the competition center.
 - The remaining distances end in the forest, with a 2 km long course to the competition center, marked with neon orange ribbons.
 - Road to the start and return to the competition center from finish is partly along an asphalt road - please be careful.
- Time limit - 120 minutes.**

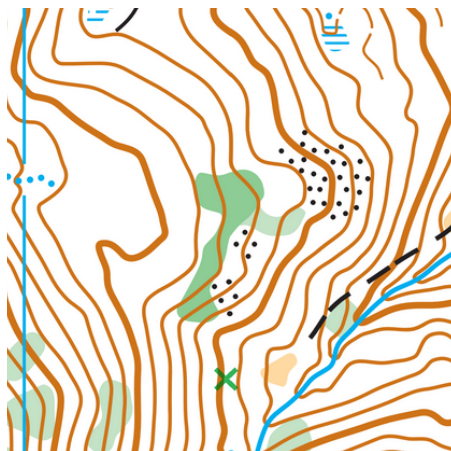
Map scale: 1:7 500

3rd stage **OSTRA MOUNTAIN**

12.07.2024, start 15:00

Cartographer:
Jacek Morawski

Course planner:
Karol Galicz



MIDDLE DISTANCE

Typically mountainous terrain with large elevation gains. Runnability and visibility are very good. There will also be deep ravines and watercourses in the forest. The road network is very limited, having little impact on the specificity of the courses. The stage will be characterized by a high density of control points.

Elevation gain - 300 meters.

TECHNICAL ISSUES

- Road to the start - 700 meters (elevation gain 60 meters) - blue ribbons.
- Categories WM10N, W10, M10, W12, M12, W14, M14, WM12-14B, W80, Open S, Rodzinna - road to the start - 150 meters - yellow ribbons.
- Road to the starting point - 50 meters - for categories WM10N, W10, M10, W12, M12, W14, M14, WM12-14B, Open S, Rodzinna.
- Road to the starting point - 90 meters - for the remaining categories.
- WM10N and Rodzinna courses are marked with "smiling and frowning faces".
- One of the courses of the WM10N and Rodzinna will be marked with neon orange ribbons. This course is mandatory for these categories.

- Time limit - 120 minutes.

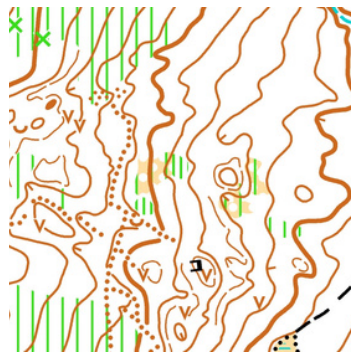
Map scale: 1:7 500

4th stage **WYSOTA**

13.07.2024, start 10:00

Cartographer:
Włodzimierz Dyzio

Course planner:
Włodzimierz Dyzio



LONG DISTANCE SHORTENED

The stage will be held around Wysota Hill. A typical mountain run awaits you. Runnability from very good to difficult in places, the road network is limited. In some parts of the map there are marshes and watercourses.

TECHNICAL ISSUES

- WM10N and Rodzinna courses are marked with "smiling and frowning faces".
- Due to the lack of characteristic linear elements, for courses of categories W10, M10, W12, M12, WM12-14B, one of the courses in the forest will be marked with neon orange ribbons. This course is mandatory for these categories.
- From the competition center, road to the start - 2,2 km (elevation gains 50 meters) - blue ribbons - on the way to the start, you pass the finish line (after 1,5 km).
- There will be two drinking water points on one of the paths in the forest. The roads to them will depend on the selection of the route choice.
- **Time limit - 150 minutes.**

Map scale 1:10 000

For categories W55 - W70 and M65 - M80
Map scale 1:7 500

TRAIL SPA PARK WYSOWA-ZDRÓJ

ORIENTEERING 13.07.2024, start 11:00-15:00

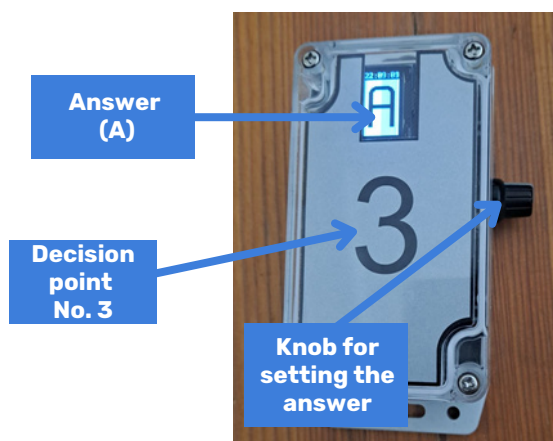
Cartographer:
Piotr Pietroń

Course planner:
Karol Galicz



TECHNICAL ISSUES

- Map scale 1:4 000
- Contour cutting - 2 meters.
- Road to the start - 100 meters - neon orange ribbons.
- Start location - Spa Park Wysowa-Zdrój.
- Course length - 700 metrów.
- Number of control points - 22 c.p.
- Competitors will be released on the course without assigned starting minutes.
- After the Pre0, competitors will have to complete a timed task.
- Points can be scored in any order.
- The competitors receive a map and a plastic card which the answers will be marked at the decision points.
- Answers will be marked using a reading station (photo below).
- At the start, instructions for equipment recording answers will be provided.
- Zero tolerance - 4 meters.



Instead of entry fees for the competition, we recommend supporting the "Na Ratunek" Foundation.

Below you will find some important information for Trail Orienteering newcomers: 1. Competitors can move only on paths or road. Please, stay on the paths.

2. Maps will include out-of-bounds areas.

3. Competitors can score a points in any order.

More information about Trail orienteering you can find here www.orientacjaprecyzyjna.pl

5th stage ŁOPACIŃSKI VALLEY

14.07.2024, start 9:00

Cartographer:
Włodzimierz Dyzio

Course planner:
Włodzimierz Dyzio



LONG DISTANCE SHORTENED "PURSUIT"

The northern part has a varied runnability, where you will find many windthrows, watercourses, marshes and various terrain features. The southern part is an area with typical mountain characteristics - good runnability and numerous elevation gains. The road network is very limited, having little impact on the specificity of the courses.

TECHNICAL ISSUES

- Road to start - 1,8 km (elevation gain 40 meters) - blue ribbons.
 - Road to the starting point - 60 meters.
 - WM10N and Rodzinna courses - the start is located near the finish line, the run will take place in the Spa Park.
 - Handicap start - competitors with loss (after IV stages) less than 1 hour. Other people - interval start (1 min.).
 - For categories W21E and M21E V stage will be held in upside-down handicap form.
 - In the case of categories starting in the handicap start, the victory in the Wawel Cup is determined by punching the finish control.
 - Competitors are road traffic participants and do not have precedence over cars - please be careful when crossing the asphalt road.
 - There will be two drinking water points on one of the paths in the forest. The roads to them will depend on the selection of the route choice.
- Time limit - 150 minutes.**

Map scale 1:10 000

For categories W55 - W70 and M65 - M80
Map scale 1:7 500

For categories WM10N and Rodzinna
Map scale 1:4 000

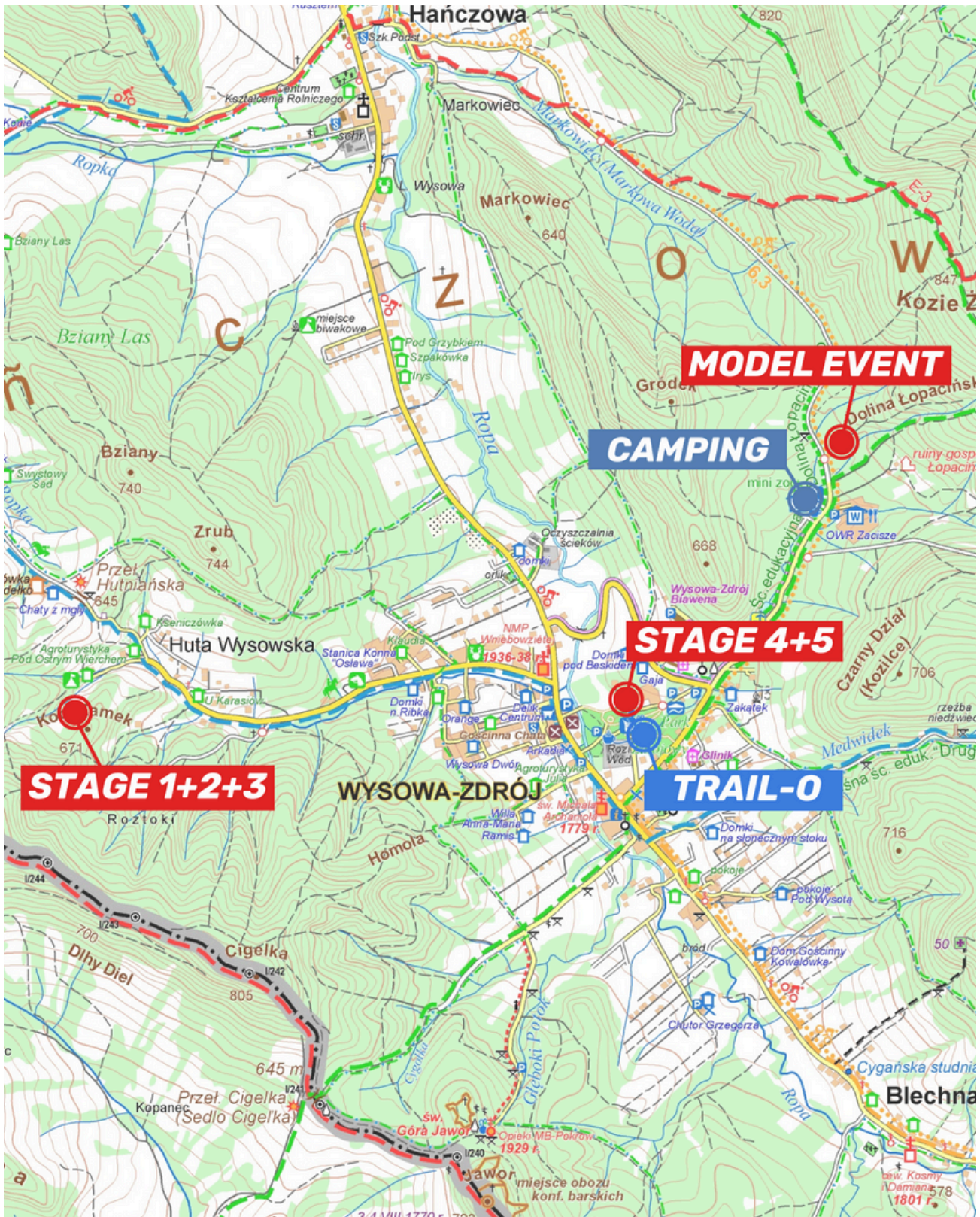
MAP SCALE

	STAGE 1	STAGE 2	STAGE 3	STAGE 4	STAGE 5
W10, M10	1:10 000	1:7 500	1:7 500	1:10 000	1:10 000
WM10N	1:10 000	1:7 500	1:7 500	1:10 000	1:4 000
W12, M12	1:10 000	1:7 500	1:7 500	1:10 000	1:10 000
W14	1:10 000	1:7 500	1:7 500	1:10 000	1:10 000
M14	1:10 000	1:7 500	1:7 500	1:10 000	1:10 000
W16, W45	1:10 000	1:7 500	1:7 500	1:10 000	1:10 000
M16, W40	1:10 000	1:7 500	1:7 500	1:10 000	1:10 000
W18, W35	1:10 000	1:7 500	1:7 500	1:10 000	1:10 000
M18, M40	1:10 000	1:7 500	1:7 500	1:10 000	1:10 000
W20, M45	1:10 000	1:7 500	1:7 500	1:10 000	1:10 000
W21E, M20, M35	1:10 000	1:7 500	1:7 500	1:10 000	1:10 000
M21E	1:10 000	1:7 500	1:7 500	1:10 000	1:10 000
M21S	1:10 000	1:7 500	1:7 500	1:10 000	1:10 000
W21S	1:10 000	1:7 500	1:7 500	1:10 000	1:10 000
W35-49S	1:10 000	1:7 500	1:7 500	1:10 000	1:10 000
M35-49S	1:10 000	1:7 500	1:7 500	1:10 000	1:10 000
W50	1:10 000	1:7 500	1:7 500	1:10 000	1:10 000
M50	1:10 000	1:7 500	1:7 500	1:10 000	1:10 000
W55, M65	1:7 500	1:7 500	1:7 500	1:7 500	1:7 500
M55	1:10 000	1:7 500	1:7 500	1:10 000	1:10 000
W60, M70	1:7 500	1:7 500	1:7 500	1:7 500	1:7 500
M60	1:10 000	1:7 500	1:7 500	1:10 000	1:10 000
W65, W70	1:7 500	1:7 500	1:7 500	1:7 500	1:7 500
M75, M80	1:7 500	1:7 500	1:7 500	1:7 500	1:7 500
WM12-14B	1:10 000	1:7 500	1:7 500	1:10 000	1:10 000
Open S	1:10 000	1:7 500	1:7 500	1:10 000	1:10 000
Open L	1:10 000	1:7 500	1:7 500	1:10 000	1:10 000
Rodzinna	1:10 000	1:7 500	1:7 500	1:10 000	1:4 000

COURSE PARAMETERS

CATEGORY	STAGE 1			STAGE 2			STAGE 3			STAGE 4			STAGE 5		
	LENGTH	CLIMB	CONTROLS	LENGTH	CLIMB	CONTROLS	LENGTH	CLIMB	CONTROLS	LENGTH	CLIMB	CONTROLS	LENGTH	CLIMB	CONTROLS
W10, M10	1,4	120	6	1,7	75	8	1,6	120	9	2,5	130	6	3,0	40	7
WM10N	1,7	105	6	1,6	70	8	1,4	110	6	2,6	130	8	1,5	10	9
W12, M12	1,8	110	8	2,1	95	9	1,7	140	11	2,3	130	7	2,7	50	6
W14	2,4	125	7	2,2	120	8	1,9	145	16	2,6	130	9	3,6	70	9
M14	2,7	190	10	2,1	120	9	2,0	180	16	2,6	135	10	3,8	75	12
W16, W45	3,2	215	7	2,3	125	8	2,5	170	21	3,3	165	11	4,3	90	12
M16, W40	3,2	235	10	2,3	125	11	2,8	190	19	4,2	245	12	4,3	95	13
W18, W35	3,6	225	7	2,5	140	12	2,8	225	19	4,0	200	10	4,8	110	12
M18, M40	4,3	250	10	2,5	125	10	3,1	275	24	5,0	300	12	4,8	170	13
W20, M45	4,1	250	12	2,5	125	11	2,9	220	21	4,2	200	10	4,9	145	15
W21E, M20, M35	4,4	220	12	2,6	135	12	3,3	275	24	5,0	260	13	5,4	170	13
M21E	5,5	310	14	3,3	170	13	3,9	355	29	6,1	350	14	6,6	230	19
M21S	3,7	270	11	2,2	145	10	2,9	195	20	2,6	140	11	3,8	125	9
W21S	3,0	240	10	2,2	130	11	2,5	170	17	3,0	135	12	3,4	100	9
W35-49S	3,0	210	8	2,1	120	9	2,1	140	15	2,9	165	10	4,0	80	12
M35-49S	3,2	240	10	2,2	125	11	2,4	140	17	3,2	190	9	4,6	90	14
W50	3,0	180	9	2,1	125	8	2,3	160	19	3,1	135	10	3,8	80	11
M50	4,1	235	10	2,6	150	12	2,9	195	20	4,0	230	10	5,1	170	14
W55, M65	2,7	220	8	2,3	130	10	2,3	130	15	3,1	155	9	4,1	75	13
M55	3,3	240	10	2,5	130	10	2,5	170	17	4,0	220	8	4,9	155	11
W60, M70	2,3	150	9	2,1	125	9	2,0	140	16	2,6	130	9	3,8	65	11
M60	3,2	225	12	2,4	130	10	2,4	140	18	3,7	215	9	5,0	95	15
W65, W70	1,9	110	9	2,1	120	9	1,9	140	13	2,5	110	10	2,6	40	10
M75, M80	1,8	125	8	1,9	110	8	1,8	115	14	1,9	90	8	2,5	45	10
WM12-14B	1,6	90	7	1,7	85	9	1,6	130	8	2,5	135	8	2,7	50	7
Open S	2,7	220	8	2,2	125	6	1,8	140	13	2,7	140	9	3,5	50	8
Open L	3,7	230	8	2,7	170	7	2,7	195	14	5,0	230	8	4,5	170	7
Rodzinna	1,7	105	6	1,6	70	8	1,4	110	6	2,6	130	8	1,5	10	9

LOCATION MAP



**GPS
COORDINATES**

COMPETITION OFFICE 10.07 49.442014, 21.137899

MODEL EVENT 49.453167, 21.192594

STAGE I, II & III 49.440874, 21.137699

STAGE IV & V + TRAIL ORIENTEERING 49.440186, 21.177245

'ZACISZE' CAMPING 49.449579, 21.193502

'ZACISZE' MAIN PARKING 49.449341, 21.194749

General information (for all stages):

- Maps for each stage are printed on coated paper and wrapped in foil.
- Control descriptions will be printed on the map. Additional control description can be taken in the starting box.
- Maps will not be taken after the run - please respect the fair-play rules.
- Road to the start is always marked from the competition center. Road to the start at all stages - blue ribbons or blue and yellow - in the case of two starts locations.
- In the first starting box, chips are checked, in the second box, map descriptions are taken, and in the third box, the map is taken, the category is checked for correctness and waiting for the start signal.
- During all stages, competitors of the Rodzinna, WM10N, OPEN L, OPEN S categories start at any minute from the starting box (**but not earlier than 15 minutes after minute "0" and not later than 10 minutes before the last starting minute**).
- Contour cutting - every 5 meters on all stages. Exception for children's categories during stage V (run around the Spa Park) - every 2 meters.
- A medical service point will be located at the finish line of each stage.
- In stage III, the number of points (mainly Elite category) reaches 29 - please pay attention to starting with a chip of the appropriate capacity and a sufficiently large control description holder.
- Toilets located in the competition center.
- Washing point located in the competition center - the use of cleaning agents/detergents is **strictly prohibited**.